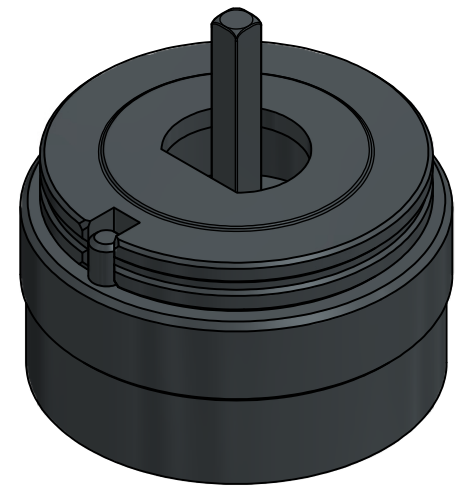
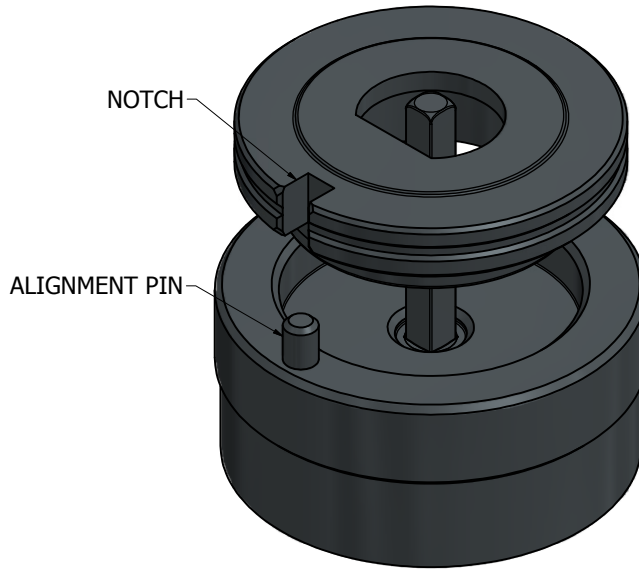
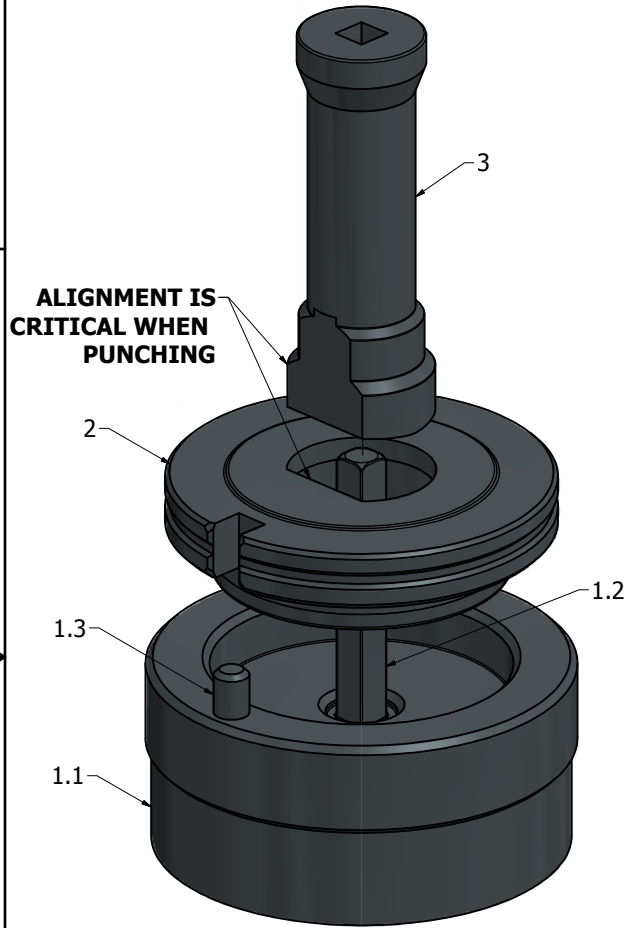


STEP 1: SLIDE THE COLLAR DOWN ONTO THE BASE MAKING SURE TO ALIGN THE NOTCH IN THE COLLAR WITH THE ALIGNMENT PIN ON THE BASE.



Finish:
Black Oxide

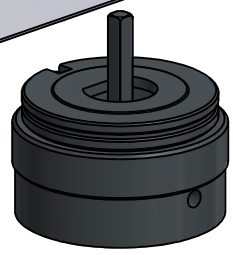
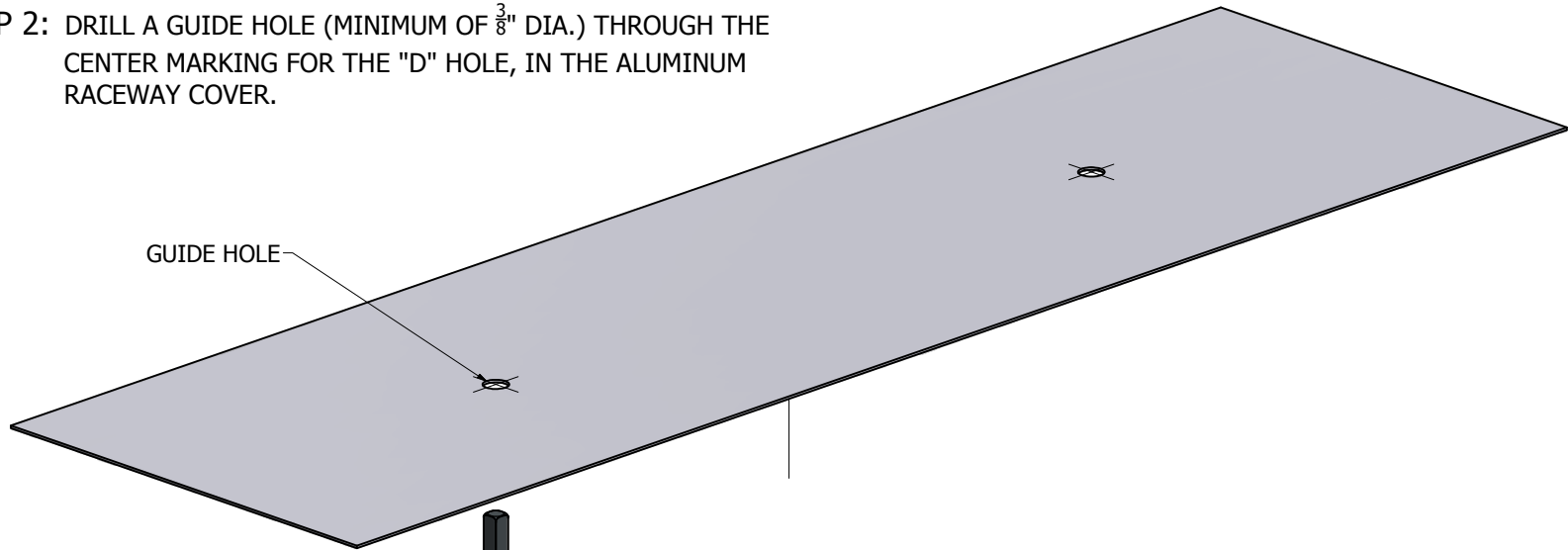
Parts List		
Item	Part #	Description
1		D-Punch Base Assembly
1.1		D-Punch Base
1.2		Guide Peg
1.3		Alignment Pin
2		D-Punch Collar
3		Punch

THIS DRAWING WAS CREATED AT NO CHARGE TO ASSIST YOU IN VISUALIZING OUR PROPOSAL. THE DRAWING HEREIN IS THE PROPERTY OF SIGNCOMP. PERMISSION TO COPY OR REVISE THIS DRAWING OR TO USE THIS DRAWING FOR PRODUCTION IS STRICTLY PROHIBITED AND CAN ONLY BE COPIED, REVISED OR USED FOR PRODUCTION WITH THE EXPRESSED WRITTEN PERMISSION OF SIGNCOMP.

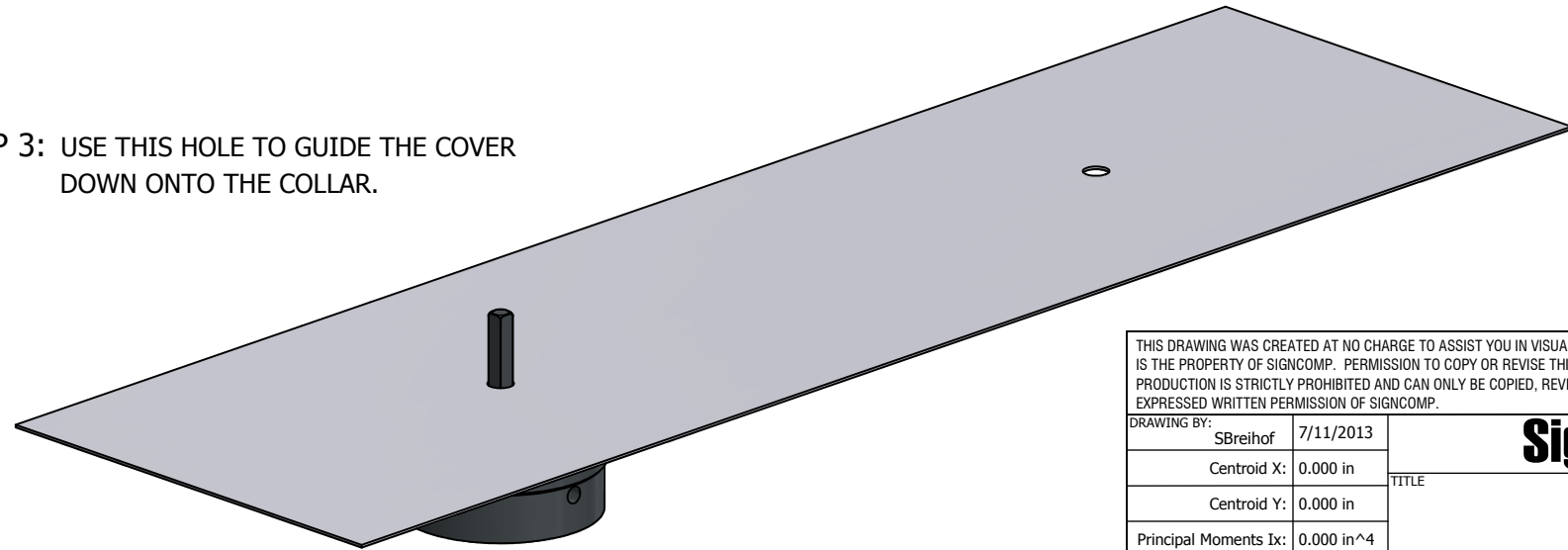
DRAWING BY:	SBreihof	7/11/2013
Centroid X:	0.000 in	
Centroid Y:	0.000 in	
Principal Moments Ix:	0.000 in ⁴	
Principal Moments Iy:	0.000 in ⁴	
Section Modulus Ix:	0.000 in ³	
Section Modulus Iy:	0.000 in ³	

SignComp		TITLE
		D-Punch
PART NO	5080	REV
SHEET 1 OF 3		

STEP 2: DRILL A GUIDE HOLE (MINIMUM OF $\frac{3}{8}$ " DIA.) THROUGH THE CENTER MARKING FOR THE "D" HOLE, IN THE ALUMINUM RACEWAY COVER.

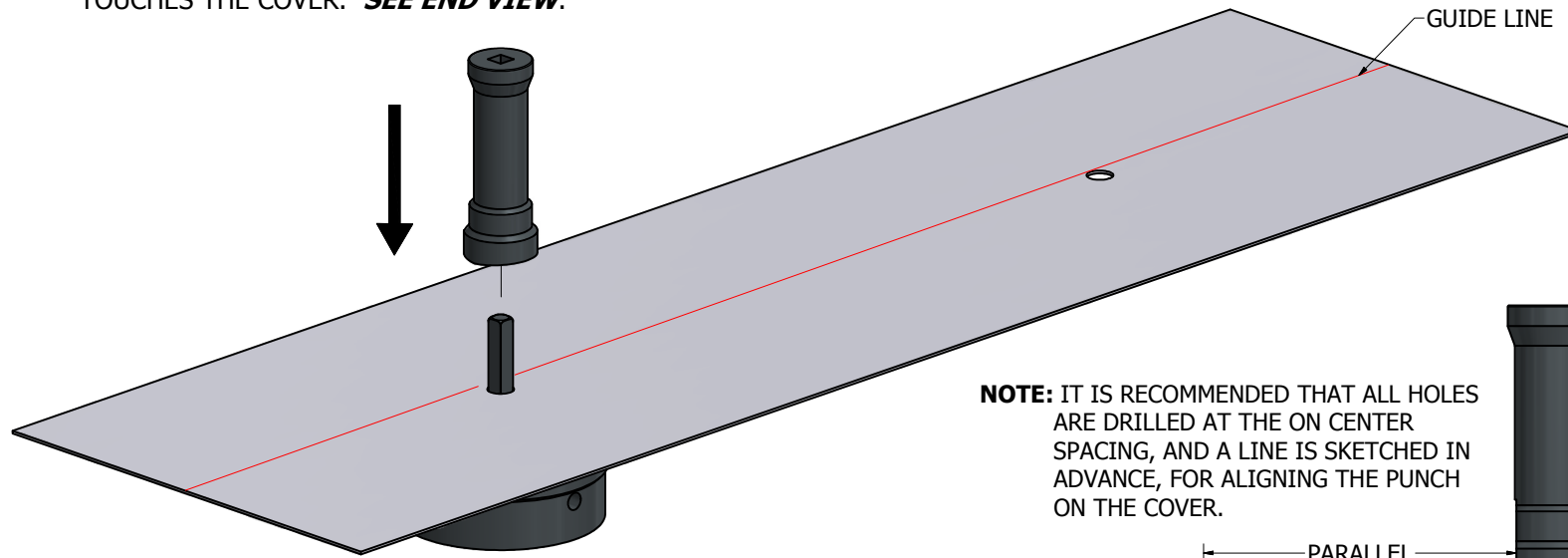


STEP 3: USE THIS HOLE TO GUIDE THE COVER DOWN ONTO THE COLLAR.

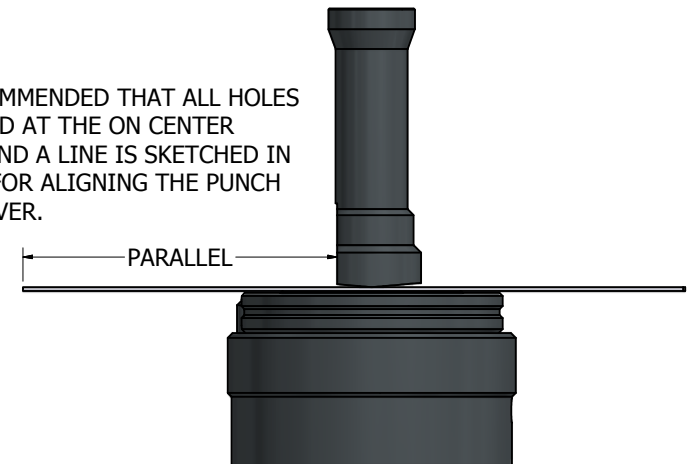


THIS DRAWING WAS CREATED AT NO CHARGE TO ASSIST YOU IN VISUALIZING OUR PROPOSAL. THE DRAWING HEREIN IS THE PROPERTY OF SIGNCOMP. PERMISSION TO COPY OR REVISE THIS DRAWING OR TO USE THIS DRAWING FOR PRODUCTION IS STRICTLY PROHIBITED AND CAN ONLY BE COPIED, REVISED OR USED FOR PRODUCTION WITH THE EXPRESSED WRITTEN PERMISSION OF SIGNCOMP.			
DRAWING BY:	SBreihof	7/11/2013	SignComp
Centroid X:	0.000 in		
Centroid Y:	0.000 in		TITLE
Principal Moments Ix:	0.000 in ⁴		D-Punch
Principal Moments Iy:	0.000 in ⁴		PART NO
Section Modulus Ix:	0.000 in ³		
Section Modulus Iy:	0.000 in ³		5080
			REV
			SHEET 2 OF 3

STEP 4: ALIGN THE PUNCH ONTO THE GUIDE PEG, THEN LOWER THE PUNCH DOWN UNTIL IT TOUCHES THE COVER. **SEE END VIEW.**

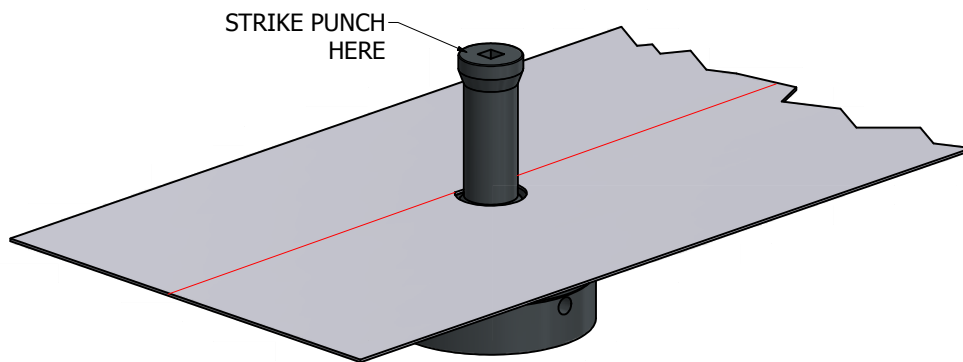


NOTE: IT IS RECOMMENDED THAT ALL HOLES ARE DRILLED AT THE ON CENTER SPACING, AND A LINE IS SKETCHED IN ADVANCE, FOR ALIGNING THE PUNCH ON THE COVER.



END VIEW

STEP 5: ONCE THE PUNCH IS ALIGNED, MAKING SURE THE FLAT EDGE ON THE PUNCH IS PARALLEL WITH THE LONG EDGE OF THE COVER, STRIKE THE BUTT END OF THE PUNCH WITH A HAMMER OR MALLOT.



NOTE: IT IS RECOMMENDED THAT THE COLLAR BE REMOVED AFTER EVERY HOLE HAS BEEN PUNCHED, IN ORDER TO REMOVE DEBRIS. THIS WILL HELP PREVENT THE DEVICE FROM NOT FUNCTIONING PROPERLY.

STEP 6: ONCE THE PROCESS IS COMPLETE, LIFT THE PUNCH UP OFF OF THE GUIDE PEG AND REMOVE THE COVER FROM THE DEVICE.

THIS DRAWING WAS CREATED AT NO CHARGE TO ASSIST YOU IN VISUALIZING OUR PROPOSAL. THE DRAWING HEREIN IS THE PROPERTY OF SIGNCOMP. PERMISSION TO COPY OR REVISE THIS DRAWING OR TO USE THIS DRAWING FOR PRODUCTION IS STRICTLY PROHIBITED AND CAN ONLY BE COPIED, REVISED OR USED FOR PRODUCTION WITH THE EXPRESSED WRITTEN PERMISSION OF SIGNCOMP.

DRAWING BY:	SBreihof	7/11/2013	SignComp	
Centroid X:	0.000 in	TITLE		
Centroid Y:	0.000 in	Principal Moments Ix:	0.000 in ⁴	PART NO
Principal Moments Iy:	0.000 in ⁴	Section Modulus Ix:	0.000 in ³	
Section Modulus Iy:	0.000 in ³	5080		SHEET 3 OF 3